

HR-AS0960/4

ABA - ASPHALT BINDER ANALYZER

STANDARTLAR: TS EN 12697-39, AASHTO TP53, AASHTO T308, ASTM D6307

The HIRATEST ABA Asphalt Binder Analyzer is used to determine the binder content of hot mix asphalt/bituminous mixtures by the method of loss on ignition. The system combines a sophisticated furnace and weighing system to continuously measure the weight loss of a bituminous mixture during combustion and automatically calculates its binder content at the end of the test.

Supplied complete with 2 specimen baskets with a safety cover with a carrying tray mounted, a fork to catch the tray, and 3 meter metal exhaust pipe.

If the tests are to be performed consecutively without waiting for cooling, Spare Basket and Tray Set and Cooling cage and should be ordered separately.

Spare Basket and Tray Set consists of 2 pcs. basket (one has a safety cover) and a carrying tray mounted.

OVEN AND AFTERBURNER

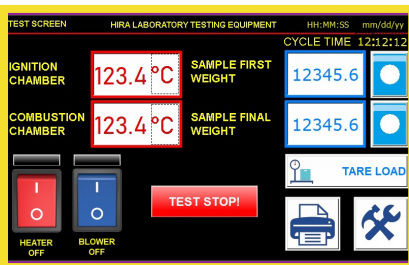
- High efficiency heating system with afterburner chamber for a total combustion of exhaust fumes to minimize emissions to conform with EU Directives
- Sample size up to 4500 g for more representative test results
- Maximum power rating is 7,5 kW

HARDWARE

- 16 bit microprocessor with one CPU card controlling test data display, temperature, database and internal functions
- Usb support to store test results
- On board thermal printer
- Weighing system 15000 g capacity, 0.1 g resolution and detecting mass variations of $\pm 0,1$ g
- PID closed loop thermoregulation for both oven and afterburner chamber
- 950 °C Afterburner 540 °C oven set temperature according to standard
- TFT touchscreen with 800x480 resolution and 65000 colors



HR-AS0960



FIRMWARE

- Bidirectional real time communication with the weighing system
- Test setting menu with physical and descriptive sample parameters (initial weight, weight loss percentage, correction factor)
- Calibration menu to check and set the temperature and weight calibration for possible manual control of the test performance
- Test performance menu with simultaneous display of all the test data
- Internal memory for up to 100 tests

SAFETY FEATURES

- Automatic door locking after 150 °C
- Automatic monitoring of closed door before test start

Technical Specifications:

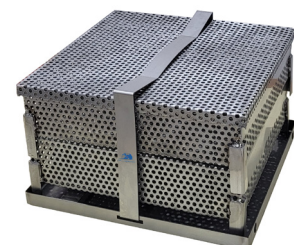
Product Code	Product Name	Dimensions (mm)	Weight (kg)	Power (kW)	Power Supply
HR-AS0960	Asphalt Binder Analyzer (ABA) by the Ignation Method	700x1000x1280	135	7,5	380 V, 50 Hz, 3 ph

Spare Parts & Accessories:

Product Code	Product Name
HR-AS0960/1	Spare Basket and Tray Set
HR-AS0960/2	Cooling Cage
HR-AS0960/3	Fork
HR-AS0960/4	Metal Exhaust Pipe, 3 meter



HR-AS0960/2



HR-AS0960/1



HR-AS0960/3