

CBR TEST MACHINE WITH LOAD RING

STANDARDS: EN 13286-47, BS 1377:4, ASTM D1883, AASHTO T193, NF P94-078, UNI CNR 10009

CBR Test Machine is designed for performing laboratory evaluation of the CBR value of highway sub-bases and sub-grade and determination of the strength of cohesive materials.

The device is composed of a robust and compact two column frame with adjustable upper cross beam.

The CBR Test Machine designed to load the penetration piston into the soil sample at a constant rate to measure the applied load and piston penetration at predetermined intervals.

The frame has 50 kN capacity.

Two test speeds can be chosen by using speed buttons on the device as 1.0 mm/min for BS and 1.27 mm/min. for ASTM/EN/AASHTO Tests.

For safety, the up and down travel of the lower platen is limited the use of limit switches.

The measuring system consists of a 50 kN capacity Load Ring fitted to the upper cross beam to read stability values and the 30 x 0.01 mm Analog Dial Indicator fitted to the column.

Supplied complete with 50 kN Load Ring with 0,01 mm resolution Analog Dial gauge, 30 x 0,01 mm Analog Dial Indicator and CBR Penetration Piston.

Technical Specifications:

Product Code	Product Name	Dimensions (cm)	Weight (kg)	Power Supply
HR-S5005	CBR Test Machine	47x61x115	80	220 V, 50 Hz, 1 ph
HR-S5005/60Hz	CBR Test Machine	47x61x115	80	220 V, 60 Hz, 1 ph

Spare Parts & Accessories:

Product Code	Product Name
HR-S5000/1	CBR Penetration Piston
HR-G5003	Load Ring, 50 kN capacity with 0,01 mm resolution Analog Dial gauge
HR-G0876	Analog Dial Indicator, 30 x 0,01 mm



HR-S5005

CBR MOULD AND ACCESSORIES

STANDARDS: ASTM D1883, AASHTO T193, EN 13286-47, 13286-4, BS 1924:2, BS 1377:4

This method has been developed by the California State Highway Department, and is now accepted by almost all the International Standards in force. The test is aimed to the evaluation of the bearing capacity of soil for flexible pavement design in road construction. The compaction test can be performed both with the manual rammers and the automatic compactor.

The CBR equipment, steel made and plated against corrosion is available in different versions according to the various Standards in force.

Technical Specifications for ASTM D1883, AASHTO T193 Models;

CBR Mould Set is supplied complete with Extension Collar and Perforated Base Plate.

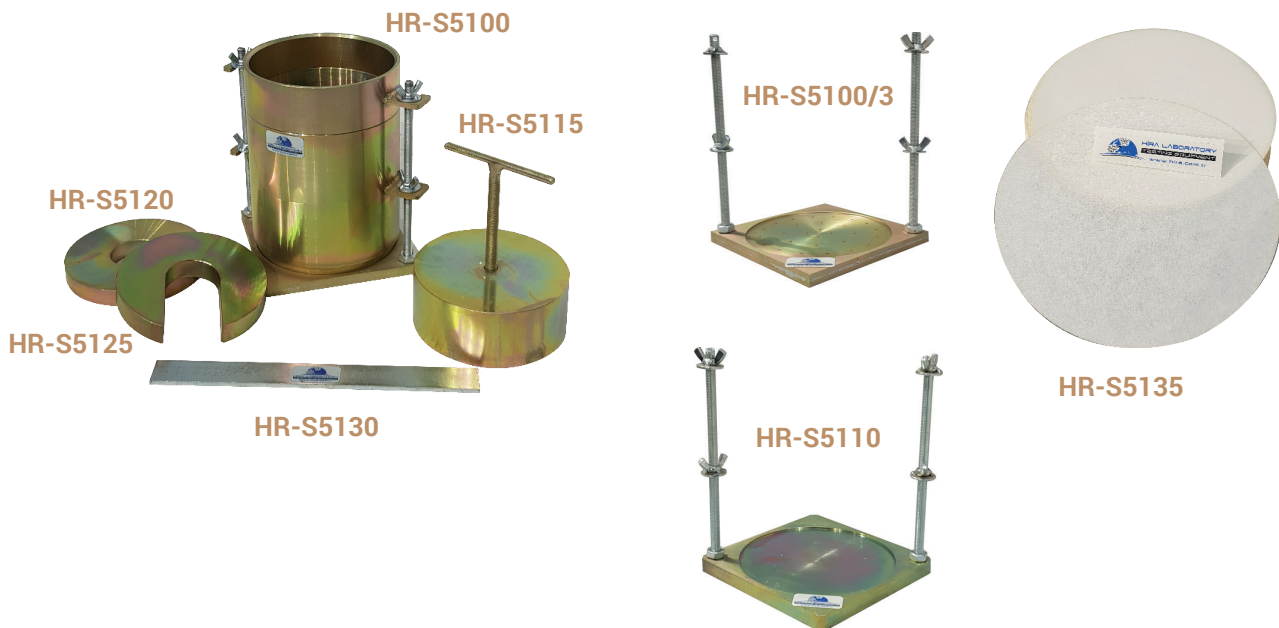
The other accessories should be ordered separately.

Technical Specifications:

Product Code	Product Name	Standard	Dimensions (mm)	Weight (kg)
HR-S5100	CBR Mould Set	ASTM, AASHTO	200x200x240	8

Spare Parts & Accessories for ASTM D1883, AASHTO T193 Models;

Product Code	Product Name	Standard	Dimensions (mm)	Weight (kg)
HR-S5100/1	CBR Mould	ASTM, AASHTO	Ø 152.4 (6") x 177.8 (7")	4,5
HR-S5100/2	Extension Collar	ASTM, AASHTO	Ø 152.4 (6") x 50 (2")	1,5
HR-S5100/3	Perforated Base Plate	ASTM, AASHTO	200x200x10	2
HR-S5110	CBR Solid Base Plate	ASTM, AASHTO	200x200x10	3,4
HR-S5115	Spacer Disc with 'T' Handle, Ø 150.8 x 61.4 mm	ASTM, AASHTO	150x150x250	8,5
HR-S5120	Annular Surcharge Weight	ASTM, AASHTO	150x150x20	2,27
HR-S5125	Slotted Surcharge Weight	ASTM, AASHTO	150x150x20	2,27
HR-S5126	Cutting Edge	ASTM, AASHTO	100x100x100	0,5
HR-S5130	Straight edge	---	300x30x5	0,3
HR-S5135	Filter Paper. No.5 x Ø 150 mm. Pack of 100.	ASTM, AASHTO	160x160x30	0,2
HR-S5140	Filter Screen, 150 µm mesh. 144 mm.	ASTM, AASHTO	150x150x10	0,1



Technical Specifications for EN 13286-47 Models;

CBR Mould (B Type Modified Proctor Mould) Set is supplied complete with Extension Collar and Solid Base Plate.

The other accessories should be ordered separately.

Technical Specifications:

Product Code	Product Name	Standard	Dimensions (mm)	Weight (kg)
HR-S5200	CBR Mould (B Type Modified Proctor Mould)	EN 13286-47	200x240x180	10
HR-S5250	Split CBR Mould (B Type Modified Proctor Mould)	EN 13286-47	200x240x180	10

Spare Parts & Accessories for EN 13286-47 Models;

Product Code	Product Name	Standard	Dimensions (mm)	Weight (kg)
HR-S5200/1	CBR Mould (B Type Modified Proctor Mould)	EN 13286-47	Ø 150 x 120	5,3
HR-S5200/2	Extension Collar	EN 13286-47	Ø 150 x 500	1,5
HR-S5200/3	CBR Solid Base Plate	EN 13286-47	200x200x100	3,4
HR-S5250/1	Split CBR Mould (B Type Modified Proctor Mould)	EN 13286-47	Ø 150 x 120	5,3
HR-S5210	Perforated Base Plate	EN 13286-47	200x200x100	2
HR-S5215	Spacer Disc with 'T' Handle, Ø 149,5 x 36 mm	EN 13286-47	150x150x170	5
HR-S5220	Annular Surcharge Weight	EN 13286-47	150x150x20	2
HR-S5225	Split Surcharge Weight	EN 13286-47	150x150x20	2
HR-S5235	Filter Paper. Coarse, Ø 148 mm. Pack of 100.	EN 13286-47	150x150x10	0,1
HR-S5130	Straight edge	---	300x30x5	0,3

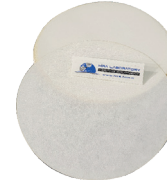
Technical Specifications for BS 1924:2, BS 1377:4 Models;

CBR Mould Set is supplied complete with Extension Collar and Solid Base Plate.

The other accessories should be ordered separately.

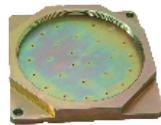
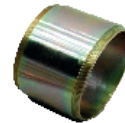
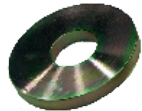
Technical Specifications:

Product Code	Product Name	Standard	Dimensions (mm)	Weight (kg)
HR-S5300	CBR Mould Set	BS	180x180x190	7

**HR-S5335****Spare Parts & Accessories for BS 1924:2, BS 1377:4 Models;**

Product Code	Product Name	Standard	Dimensions (mm)	Weight (kg)
HR-S5300/1	CBR Mould	BS	Ø 152 x 127	4,9
HR-S5300/2	Extension Collar	BS	Ø 152 x 50	1,5
HR-S5300/3	CBR Solid Base Plate	BS	200x200x100	3,4
HR-S5310	Perforated Base Plate	BS	200x200x100	2
HR-S5315	Compaction Plug with 'T' Handle, Ø 150 x 50 mm	BS	150x150x190	7
HR-S5320	Annular Surcharge Weight	BS	150x150x20	2
HR-S5325	Split Surcharge Weight	BS	100x100x100	2
HR-S5326	Cutting Collar	BS	150x150x10	0,5
HR-S5335	Filter Paper. No.1 x Ø 150 mm. Pack of 100.	BS	110x380x10	0,1
HR-S5340	C- Spanner for HR-S5300, 2 pieces	---	40x350x10	1
HR-S5345	Assembly Tool for Base Plate for HR-S5300	---	300x30x5	1
HR-S5130	Straight edge	---	300x30x5	0,3

**HR-S5415
with
HR-S5400
HR-S5410
HR-G0875**

HR-S5130**HR-S5300/3****HR-S5340****HR-S5325****HR-S5310****HR-S5315****HR-S5300/1****HR-S5300/2****HR-S5320****HR-S5345****SWELLING**

Placed on top of the soil sample to enable monitoring of swelling.

The Swell Test Set consists of Swell Plate with adjustable stem, Dial Indicator (any Dial Gauges are listed below can be chosen) and Tripod for mounting swell dial indicator in position on CBR Mould Collar.

CBR Soaking Tank has two models as 6 or 15 pieces CBR Mould capacity.

Swell Test Set and CBR Soaking Tank should be ordered separately for swelling test.

Technical Specifications for Swelling:

Product Code	Product Name	Dimensions (cm)	Weight (kg)
HR-S5400	Swell Plate	18x18x16	0,5
HR-S5410	Tripod	20x20x30	1
HR-S5415	CBR Soaking Tank, 6 sample capacity	50x70x40	3
HR-S5416	CBR Soaking Tank, 15 sample capacity	77*110*64	5

Technical Specifications for Dial Indicators:

Product Code	Product Name
HR-G0875	Analog Dial Indicator, 10 x 0,01 mm
HR-G0876	Analog Dial Indicator, 30 x 0,01 mm
HR-G0877	Digital Dial Indicator, 12,7 x 0,01 mm
HR-G0878	Digital Dial Indicator, 25 x 0,01 mm
HR-G0879	Digital Dial Indicator, 12,7 x 0,001 mm
HR-G0880	Digital Dial Indicator, 25 x 0,001 mm