

HİRA TESTING EQUIPMENT

CEN REFERENCE SAND

STANDARDS: EN 196-1

CEN Standard sand is a natural sand, which is siliceous particularly its finest fractions.

It is clean, the particles are generally isometric and rounded in shape. It is dried, screened and prepared in a modern workshop which offers every guarantee in terms of quality and consistency.

The sand is packaged in bags each containing 1350±5 g.

Reference sand size is 0,08±2 mm.



HR-CE9285

Technical Specifications:

Product Code	Product Name	Dimensions (mm)	Weight (gr)
HR-CE9285	CEN Reference Sand	270x130x30	1350

Technical Specifications:

Square mesh Size (mm)	Cumulative Retained (%)
0,08	99 ± 1
0,16	87 ± 5
0,5	67 ± 5
1	33 ± 5
1,6	7 ± 5
2	0

CEMENT MOULDS

STANDARDS: EN 196-1, ASTM C109, BS 4550

Used to produce the mortar specimens for compression and flexural tests.

Made from steel, stainless steel or hard plastic, it conforms to the above mentioned Specifications.

All dimensions and specifications comply with the related standards.

Feed Hopper is used for filling 40x40x160 mm cement moulds. Made from cast aluminum.

Cover plate and tamper for HR-CE9550 & HR-CE9555 Models should be ordered separately.

Short Spreader, Long Spreader and Straightedge for HR-CE900X Models should be ordered separately.

Steel Inserts and Reference Rods should be ordered separately.



HR-CE9000



HR-CE9300



HR-CE9500

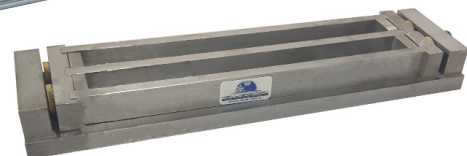


HR-CE9400

HR-CE9010/2



HR-CE9010/1



HR-CE9010