

FLEXURAL TESTING FRAMES

STANDARDS: EN 1338, 1340, 12390-5, 12390-6, BS 1881, ASTM C78, C293, C496

The multipurpose HİRA Flexural Testing Frames are designed for minimum deflection at maximum load resulting in very high accuracy. The load frame is a welded steel fabrication carrying the ram fitted to the steel base. All Frames have a single acting up stroking ram with over travel switch protection to stop the machine when maximum ram travel is reached. A load cell is used for load measurements on all frames.

Flexural Frames are designed to accept all accessories required for flexural or compression tests.

Flexural Frames are 100 kN, 200 kN, 300 kN capacity U Type, 200 kN, 500 kN capacity Wide clearance U Type and 300 kN, 500 kN capacity C Type open structure designed to allow easy and practical front loading of the specimen.

The very rigid C type design is ideal either for conventional flexural test or for more sophisticated tests such as deformability and ductility index.

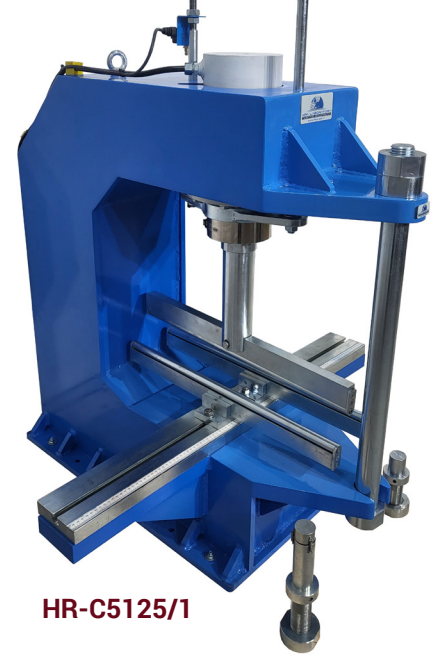
The load frame provides the stability needed for accurate and repeatable test results over the years of operation.

Flexural test assemblies should be ordered separately.

All frames can be connected to HİRA compression machine as a second frame or can be used with any HİRA power pack as an independent Flexural Machine.

The main characteristics are:

- High stability welded assembly
- High accuracy load measurement with load cells
- Can accept wide range of accessories for mentioned standards
- Can be connected to HİRA Compression Machine or Hydraulic Power Pack



HR-C5125/1

Technical Specifications:

Product Code	Product Name	Dimensions (cm)	Weight (kg)
HR-C5000/1	100 kN Flexural Testing Frame, U Type	81x100x100	200
HR-C5005/1	200 kN Flexural Testing Frame, U Type	81x100x100	225
HR-C5010/1	300 kN Flexural Testing Frame, U Type	81x100x100	300
HR-C5100/1	200 kN Wide Clearance Flexural Frame, U Type	140x60x115	500
HR-C5150/1	500 kN Wide Clearance Flexural Frame, U Type	150x75x115	600
HR-C5125/1	300 kN Wide Clearance Flexural Testing Frame, C Type	100x110x130	555
HR-C5130/1	500 kN Wide Clearance Flexural Testing Frame, C Type	100x110x135	600



HR-C5150/1



HR-C5010/1

Spare Parts & Accessories:

Product Code	Product Name
HR-G0982	Load Cell, 100 kN capacity
HR-G0983	Load Cell, 200 kN capacity
HR-G0984	Load Cell, 300 kN capacity
HR-G0986	Load Cell, 500 kN capacity