

HİRA TESTING EQUIPMENT



NON-NUCLEAR ASPHALT DENSITY GAUGE, TOUCH SCREEN

STANDARDS: ASTM D 7113-05, AASHTO T 343-12

OPERATIONAL FEATURES:

Status Bar: Displays GPS status, Data Save status, battery voltage, low battery and date and time

Project Details: Stores up to 10 projects with details

Mix Details: Stores up to 20 mixes, details include (MTD, Mix Name, Stone Size, Depth Offset, Operator Name)

Data Logging: When enabled, stores all measurements taken in single or average modes (Status Bar Icon)

Reports: Easily download data to be imported into Excel

GPS Control: When activated will display latitude and longitude positions, number of satellites the gauge is connected to as well as the UTC date and time, also available in UTM format. GPS information will store with each measurement when Data Save and GPS feature is enabled (Status Bar Icon)

Update Software: One touch upload of new software using a USB memory stick

Data Management: Quickly Access, download or delete your project data

Set Time & Date: Quick time and date setup, MM/DD/YY and DD/MM/YY formats

Units: Interchangeable settings for Density (kg/m³, lb/ft³), Temp (°C, °F), Depth (in, mm) and Stone Size (in, mm)

Enhanced Customer Support: Diagnostic screen to aid in factory Support

User Programmable Target Density: Used for calculating % compaction

GENERAL FEATURES:

- New status bar feature, displays GPS status, data save status, available battery voltage, low battery status and date and time
- Measures density in common units (kg/m³), and can measure the asphalt temperature
- New data management feature, you can store 4000 readings on the internal data logger, quickly access, download or delete your project data
- Ability to download files from the device via USB drive
- Light weight and easy to use, 24 hours of portable operation.
- Fast, reliable, accurate and repeatable readings in real time, user friendly, cost effective
- Non-Nuclear means no badges, licenses or storage and transport concerns

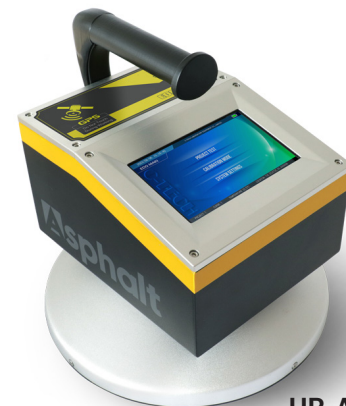
TECHNICAL SPECIFICATIONS:

MODES

Single: Reading time less than five (5) seconds. Stores Data.

Average: Averages five (5) readings and stores data including date and time. Stores thousands of records.

Continuous: Instantaneous density readings.



HR-AS0980



HR-AS0980

FUNCTIONS

Density: % Compaction

Integrated Temperature Sensing: Real time temperature display 0 °C to 350 °C

CALIBRATION MODES

Normal: Correlation offset to cores.

MEASUREMENT SPECIFICATIONS:

Sensing Area: 11 in. (27.9cm) diameter base allows optimum measurement on fine and coarse material types.

Measurement Depth: 110 mm

Measurement Display: Density, % Compaction, Surface Temperature, Mix Name & Project Name

ELECTRICAL SPECIFICATIONS:

Microprocessor Controlled

Battery: 2.5 Amp-hr NiMH, 12V

Recharge Time: 4 hours

Battery charger: 12V Universal AC charge

Computer Ports: 1 USB Port

Technical Specifications:

Product Code	Product Name	Dimensions (cm)	Weight (kg)
HR-AS0980	Non-Nuclear Asphalt Density Gauge	49x22x39	9

NON-NUCLEAR ASPHALT DENSITY GAUGE, TOUCH SCREEN

STANDARDS: ASTM D 7113-05, AASHTO T 343-12

OPERATIONAL FEATURES:

Status Bar: Displays GPS status, Data Save status, battery voltage, low battery and date and time

Project Details: Stores up to 10 projects with details

Mix Details: Stores up to 20 mixes, details include (MTD, Mix Name, Stone Size, Depth Offset, Operator Name)

Data Logging: When enabled, stores all measurements taken in single or average modes (Status Bar Icon)

Reports: Easily download data to be imported into Excel

GPS Control: When activated will display latitude and longitude positions, number of satellites the gauge is connected to as well as the UTC date and time, also available in UTM format. GPS information will store with each measurement when Data Save and GPS feature is enabled (Status Bar Icon)

Update Software: One touch upload of new software using a USB memory stick

Data Management: Quickly Access, download or delete your project data

Set Time & Date: Quick time and date setup, MM/DD/YY and DD/MM/YY formats



HR-AS0985