

HİRA TESTING EQUIPMENT

SPECIFIC GRAVITY FRAME (BOUYANCY BALANCE SYSTEM)

STANDARDS: EN 1097-6, 12390-7

Used in conjunction with a suitable electronic balance for specific gravity determination of fresh and hardened concrete and aggregates.

To be used with a suitable electronic balance fitted with an under –hook facility.

The lower part of the frame incorporates a moving platform, which carries the water tank allowing the test specimens to be weighed in both air and water.

The balance is not included in the test set and must be ordered separately. Any type of electronic balance fitted with under-bench weighing facility can be used.

Specific Gravity Test Set complete with Specific Gravity Frame, Density Basket, Cradle and Density Tank.



HR-C0500/2

Spare Parts & Accessories:

Product Code	Product Name	Dimensions (cm)	Weight (kg)
HR-C0500/1	Specific Gravity Frame	40x50x98	25
HR-C0500/2	Cradle	23x13x20	2,5
HR-C0500/3	Density Tank	28x38x30	0,300
HR-C0500/4	Density Tank	40x40x30	0,350
HR-G4040	Density Basket, 2 mm	Ø20x20	1,5

Technical Specifications:

Product Code	Product Name	Dimensions (cm)	Weight (kg)
HR-C0500	Specific Gravity Test Set	40x50x98	25

THERMOMETER, K-TYPE THERMOCOUPLE

Thermometers are used for monitoring of temperature development of mass concrete. The number of measurement points for connectors and the cable length needed for each measurement point should be indicated.

HR-C0950, HR-C0951, HR-C0952, HR-C0953 Models are supplied with 9V battery and User Manual, HR-C0954 Model is supplied with Lithium-Ion battery, Transport case and User Manual and HR-C0955 Model Temperature Datalogger is supplied with Software, Batteries, Transport case and User Manual. Usb cable for PC Connection and SD card should be ordered separately.

HR-C0955 Model Temperature Datalogger can measure the temperature of four different measurement points simultaneously. It also has a super-size memory for up to 2 Million readings; This gives you the freedom to read out the logger data at longer intervals, even when measuring cycles are shorter. An exceptionally wide measurement range and is compatible with a number of different thermocouple elements making it ideal for professional use in a variety of different fields. Battery life is 8 years at 15 min. measuring rate. Measuring rate is 1 s to 24 h (freely selectable, for online measurement 2 s to 24 h).

K Type Temperature Probe is Ø5 mm x 40 cm. Should be used with a K Type Digital Thermometer. It has 1 meter spiral cable. Working Temperature is -30°C +600°C. Total length is 53 cm.

K Type Temperature Probe, K-Type Thermocouple Cable and Connector should be ordered separately.

Spare Parts & Accessories:

Product Code	Product Name
HR-C0950/1	K Type Temperature Probe
HR-C0960	K-Type Thermocouple Cable, 1 meter.
HR-C0961	Connector
HR-C0955/1	Usb cable for HR-C0955
HR-C0955/2	SD Card for HR-C0955



HR-C0951

Technical Specifications:

Product Code	Product Name	Channel Capacity	Measuring Range (°C)	Accuracy (°C)	Resolution (°C)	Dimensions (cm)	Weight (kg)
HR-C0950	Digital Thermometer	1	-50 + 1300	±1	1	15x7x3,5	0,400
HR-C0951	Digital Thermometer	1	-200 + 1300	±1.1 or ±0.4 % of reading value	0.1	15x7x3,5	0,190
HR-C0952	Digital Thermometer	2	-50 + 400	±0,1	±0,1	14,9x7,1x4,1	0,300
HR-C0953	Digital Thermometer	2	-200 + 1300	±1.1 or ±0.4% of reading value	0.1	15x7x3,5	0,190
HR-C0954	Digital Thermometer	4	-200 + 1300	From -200 to 0; ±0.4 ±0.3 % of reading From 0 to 1300; ±0.4	0.1	21x11x6	0,485
HR-C0955	Temperature Datalogger	4	-195 + 1000	±1 % of mv (-195 to -100.1 °C) ±0.3 °C (-100 to +70 °C) ±0.5 % of mv (+70.1 to +1000 °C)	0.1	10,3x6,3x3,3	0,230



HR-C0953



HR-C0954



HR-C0952



HR-C0950



HR-C0955



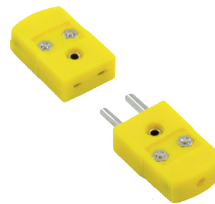
HR-C0955/1



HR-C0955/2



HR-C0950/1



HR-C0961



HR-C0960 with HR-C0961